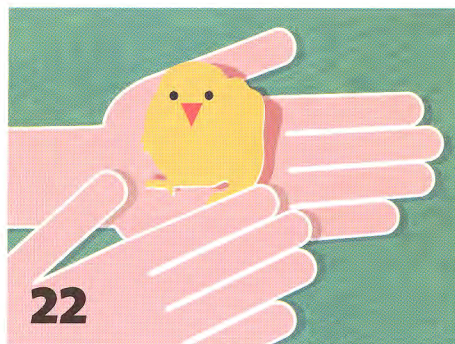
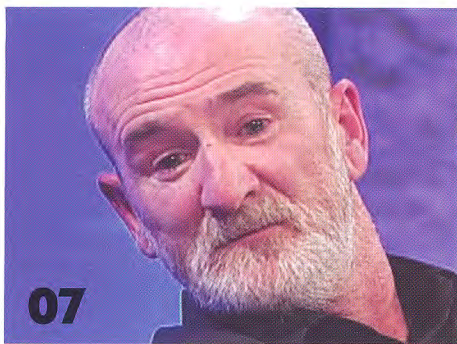


psw contents

14 cover story



News

- 06** NIASW report to Minister urges sweeping cuts to bureaucracy
- 07** Minister's SCR attack ignores reality of "blame culture"
PLUS Why Philpott is not symptomatic of welfare failings
- 08** SWU secures its 6,000th member in just a year-and-a-half
PLUS It's win win if you Recruit a Friend
- 09** Half a year on, survey shows most still in dark about ASYE
- 11** Job hunting advice for social workers looking for new jobs
PLUS Student voxpops on career hopes and fears
- 13** Reflections on the life and impact of Margaret Thatcher

Features

- 14** **Why speaking up is hard to do**
The continued perils of blowing the whistle on malpractice and advice on doing it properly
- 20** **No hiding from the truth about young runaways**
The need to invest in dedicated provision for runaway children and how one service is tackling the issue
- 22** **Taking more care**
Current failings in looking after care leavers and the reality behind claims made about care and criminality

Viewpoint

- 16** **Turning the researched into the researchers**
Jane Shears on how to involve service users in mental health practice
- 17** **The Q&A**
Aberdeenshire mental health social worker Gordon Lockerbie
- 19** **Social work's role in supporting carers**
Imran Mohammed on social work and carers
- 25** **The Chief**
Bridget Robb on BASW's AGM in Derby on 27 June

At the back

- 26** **Media watch**
PSW's regular media observer casts an eye on TV with a conscience
- 27** **Independent thinking**
Your options in keeping your home address private
- 28** **Reviews**
Social care books assessed by social workers
- 31** **UK reports**
Round-ups from BASW staff all over the UK
- 34** **Diary dates**
Upcoming events and useful contacts at BASW