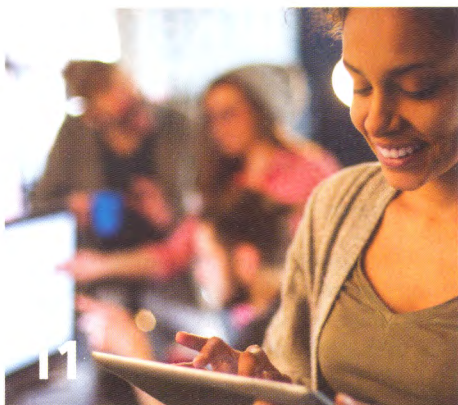
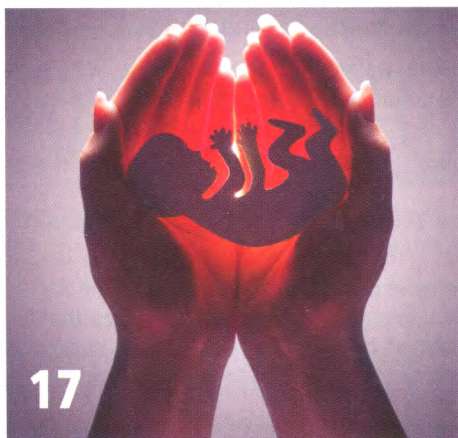


CONTENTS

Professional Social Work • September 2017



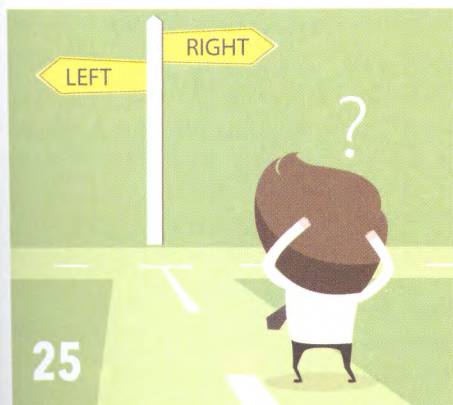
11



17



19



25

NEWS

- 06** Kinship care in the spotlight as drama for social workers tours
- 07** Lack of investment in early help is 'storing up generational problems'
- 08** It could be verse – social worker's story from practice inspires poem
- 09** Lawyers warn independence of children's guardians under threat

FOCUS

- 22** **The perils of 'compliance'**
Chris Dyke explores how social workers can be lured into a false sense of security
- 27** **World view: India plus Ask Derek**

FEATURES

- 11** **Getting ahead**
BASW's Professional Development and Education programmes to support social workers across the UK
- 13** **The solution within**
How Family Group Conferencing is helping families resolve their difficulties across the UK
- 14** **What do you think of it so far?**
PSW asked social workers at different stages to reflect on their career
- 17** **Birth of a social worker**
After two weeks' induction on a Masters in social work, Lucy Wilkin felt more able than ever to answer the question 'What makes someone want to be a social worker?'
- 19** **Lessons from placement**
Is it appropriate for students on placement to challenge the judgement of professionals? Alison Daniels did just that and experienced two contrasting responses
- 23** **Thank you**
Nigel Meffen's elderly father was sceptical when he was told a social worker was to visit. But by the time she left, both father and son had a very different story to tell...
- 25** **The management dilemma**
Ian Winter highlights the dilemmas he faced as a social work manager and lessons he has learnt

VIEWPOINT

- 21** **The agenda**
Hope is the well spring upon which social work is built, says BASW Chief Executive Dr Ruth Allen
- 28** **Been round the block**
Critical reflections from our emeritus social worker Steve Rogowski
- 29** **The direction of travel**
England's Chief Social Worker for Children and Families Isabelle Trowler spells out her vision

AT THE BACK

- 24** Books extra | **31** UK reports | **34** Diary Dates and Useful Information



Scan this image with a barcode scanning app and it will take you straight to the log-in area to access PSW online

BASW

Wellesley House, 37 Waterloo Street,
Birmingham B2 5PP
Tel: 0121 622 3911
www.basw.co.uk

Editor

Shahid Naqvi
Email: s.naqvi@basw.co.uk

Production assistant

Susan Hatton
Email: s.hatton@basw.co.uk

Editorial Advisory Board

Avery Bowser (chair), Liz Davies,
Laura Davis, Sumayya Hanson, Daniel
Keeler, Mike Garforth, Fiona Mitchell,
Karen Mitchell, Marrianna Palin

Advertising

David Nelmes, Winterburn Media Ltd
Tel: 01309 690063
Email: david@winterburnmedia.co.uk

Printed by: PCP Ltd

Haldane, Halesfield 1, Telford TF7 4QQ

Published by

**The British Association of
Social Workers**

The views expressed in this magazine are not necessarily those of the Association

ISSN 1352-3112
© BASW 2016

The paper used in this publication is sourced from sustainable forests