

INSIDE THIS ISSUE

From the editor
SHAHID NAQVI



NEWS

'Inspiring' social workers celebrated

...plus surprise message from a Hollywood star

PAGE 8



NEWS

Variation in child protection revealed

Research shows local differences in response

PAGE 9



IN FOCUS

Poverty, people and social work

Ten page special focus in wake of UN's report

PAGE 13

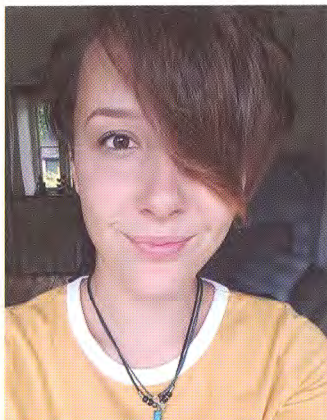


IN FOCUS

A tale of two generations

Family reflects on their careers in social work

PAGE 24



VIEWPOINT

Stop calling us snowflakes

A 'millennial' speaks out against damaging stigma

PAGE 36



AT THE BACK

Helping people with welfare claims

Jay Watts on the support social workers can give

PAGE 43

BASW
Wellesley House, 37 Waterloo Street,
Birmingham B2 5PP
Tel: 0121 622 3911 www.basw.co.uk

Editor
Shahid Naqvi
Email: shahid.naqvi@basw.co.uk

Assistant Editor
Andy McNicoll
Email: andy.mcnicoll@basw.co.uk

Production assistant
Susan Hatton
Email: s.hatton@basw.co.uk

Editorial Advisory Board
Marriane Palin and Daniel Keeler (co-chairs), Laura Davis, Peter Feldon, Lindsay Giddings, Sumayya Hanson, Bill Stone, Nicola Sylvester

Advertising
Heather Ward, Winterburn Media Ltd
Tel: 01309 690063
Email: heather.ward@basw.co.uk

Printed by: PCP Ltd
Haldane, Halesfield 1, Telford
TF7 4QQ

Published by The British Association of Social Workers
The views expressed in this magazine are not necessarily those of the Association.

The paper used in this publication is sourced from sustainable forests.

ISSN 1352-3112. ©BASW 2018

BASW

The professional association for social work and social workers

Can't avoid the elephant in the room – poverty

Prevention, everyone knows, is better than cure. In social work, that means early intervention – working with children, families and adults to resolve problems before they escalate.

But as every social worker also knows the problems individuals face cannot be looked at devoid from reference to wider society.

Poverty is often in a very real way the root cause of people's misery. Reducing the causes of it would diminish many of the issues the people social workers support struggle with in their lives.

So, shouldn't we expect our government – particularly when it governs one of the richest countries in the world – to make it a priority to alleviate poverty?

A dominant narrative since the financial crisis has been the need to balance budgets coupled with a demonising of those on benefits. The UN's special rapporteur's damning critique of the UK blew that apart. (see page 20).

This edition of PSW focuses on poverty and its very close association with social work. Our front cover shows activist Charlotte Hughes handing out food to those who can barely afford to eat.

Poverty is too often the elephant in the room that leaves social workers in despair.

It is time to call it out.

If you have a view on any of the editorial content or ideas for future articles contact editor@basw.co.uk