

# INSIDE THIS ISSUE



## NEWS

### Reaction to Channel 4 drama *Kiri*

Latest screen portrayal of social work splits opinion

**PAGE 5**

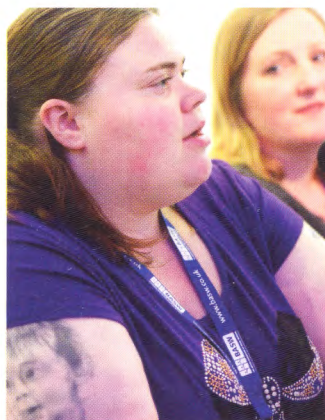


## IN FOCUS

### Keeping it real

The social worker turning real life into drama

**PAGE 15**



## IN FOCUS

### After adoption

Report from launch of BASW's enquiry

**PAGE 18**

From the Editor  
**SHAHID NAQVI**



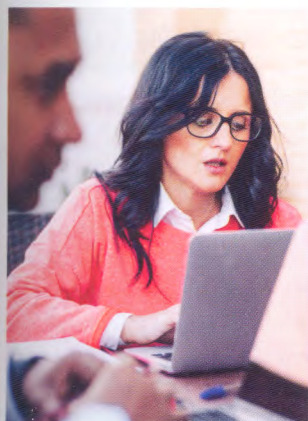
## No arguing with 8,500 social workers

Back in 2016, a PSW survey into work conditions found nearly two thirds of social workers thought their office was unfit for purpose. They highlighted outdated IT, lack of quiet space or permanent desks, noisy offices, temperature extremes and even vermin. It was, admittedly, a relatively small survey based on 650 respondents.

Fast forward two years and similar concerns are raised on a far larger scale by 8,500 social workers responding to 'health checks' on work conditions carried out by local authorities in England. The findings, analysed and published for the first time in this issue, are hard to argue against. There's an irony in expecting social workers to do some of the most complex and life-changing work known to society while not giving them the tools to do so. And then when things go wrong, publicly holding them to account. Whatever your views of Channel 4's series *Kiri*, it did illustrate this aspect of social work well.

Some authorities, of course, get it right, as is also highlighted in this issue. But not enough. BASW's Respect for Social Work Campaign lobbying for better working conditions is clearly needed. It is time those in charge listened.

If you have a view on any of our editorial content or ideas for future articles contact [editor@basw.co.uk](mailto:editor@basw.co.uk)

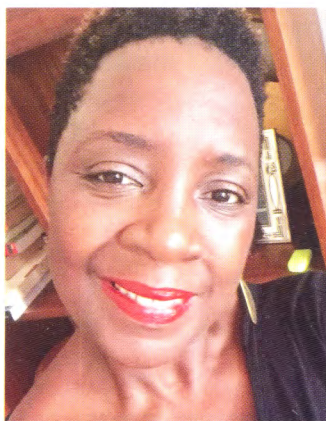


## IN FOCUS

### Give us the tools to do our job

The message from local authority social workers

**PAGE 20**



## VIEWPOINT

### Is a permanent desk too much to ask for?

Sheila Lewis on why she's not a fan of hot desking

**PAGE 28**



## AT THE BACK

### Challenging poor pay and conditions

Mario Villarreal on social work in Argentina

**PAGE 37**

**BASW**  
Wellesley House, 37 Waterloo Street,  
Birmingham B2 5PP  
Tel: 0121 622 3911 [www.basw.co.uk](http://www.basw.co.uk)

**Editor**  
Shahid Naqvi  
Email: [shahid.naqvi@basw.co.uk](mailto:shahid.naqvi@basw.co.uk)

**Assistant Editor**  
Andy McNicoll  
Email: [andy.mcnicoll@basw.co.uk](mailto:andy.mcnicoll@basw.co.uk)

**Production assistant**  
Susan Hatton  
Email: [s.hatton@basw.co.uk](mailto:s.hatton@basw.co.uk)

**Editorial Advisory Board**  
Avery Bowser (chair), Laura Davis,  
Peter Feldon, Mike Garforth, Lindsay  
Giddings, Sumayya Hanson, Daniel  
Keeler, Karen Mitchell,  
Marrianna Palin, Bill Stone,  
Nicola Sylvester

**Advertising**  
David Nelmes, Winterburn Media Ltd  
Tel: 01309 690063  
Email: [david@winterburnmedia.co.uk](mailto:david@winterburnmedia.co.uk)

**Printed by: PCP Ltd**  
Haldane, Halesfield 1, Telford  
TF7 4QQ

**Published by The British Association of Social Workers**  
The views expressed in this magazine are not necessarily those of the Association.

The paper used in this publication is sourced from sustainable forests.

ISSN 1352-3112. ©BASW 2017

