

# INSIDE THIS ISSUE



## NEWS

### Asylum assessments system questioned

Home Office accused of 'getting it wrong'

**PAGE 8**



## NEWS

### Time for direct work not paperwork

BASW campaign aims to shift the balance

**PAGE 14**

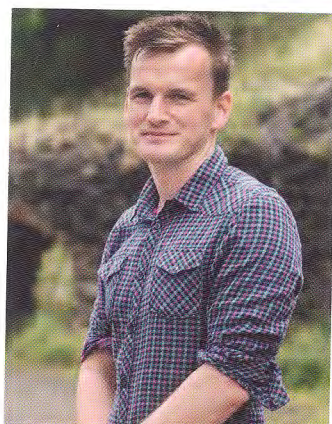


## IN FOCUS

### 'They said it was a lifestyle choice'

CSE victim Sammy Woodhouse speaks out

**PAGE 16**



## IN FOCUS

### Engaging fathers in social work

PSW visits a project working with dads

**PAGE 20**



## VIEWPOINT

### Families should not have to fight alone

Rob Mitchell and Elaine James on Justice for LB

**PAGE 31**



## AT THE BACK

### How data protection changes impact you

Sophie Devlin looks at the GDPR regulations

**PAGE 36**

From the Editor  
**SHAHID NAQVI**



## Tainted legacy of a campaigner for social justice

Given the crimes that overshadowed her latter life, a photo of Winnie Mandela may seem a controversial choice for our front cover.

But not many people know Winnie started her professional life as a social worker. Fuelled by a strong sense of social justice, her activism grew while witnessing the full impact of South Africa's racist apartheid regime on the people she served. The photo on the front is taken from when she was exiled as a result.

There can be no excusing Winnie's later actions. But equally we must not forget how she bravely stood against a brutal and brutalising regime that harassed, imprisoned, tortured and separated her from her family.

Let us not also forget as we mark 25 years since the murder of black teenager Stephen Lawrence that it wasn't so long ago that Britain's biggest police force was found to be institutionally racist.

The recent scandal of the Windrush generation reminds us that complacent racism still exists at the heart of our establishment.

And finally, let's not forget that apartheid, in all its ugliness, was ultimately a legacy of European colonialism.

If you have a view on any of our editorial content or ideas for future articles contact [editor@basw.co.uk](mailto:editor@basw.co.uk)

**BASW**  
Wellesley House, 37 Waterloo Street,  
Birmingham B2 5PP  
Tel: 0121 622 3911 [www.basw.co.uk](http://www.basw.co.uk)

**Editor**  
Shahid Naqvi  
Email: [shahid.naqvi@basw.co.uk](mailto:shahid.naqvi@basw.co.uk)

**Assistant Editor**  
Andy McNicoll  
Email: [andy.mcnicoll@basw.co.uk](mailto:andy.mcnicoll@basw.co.uk)

**Production assistant**  
Susan Hatton  
Email: [s.hatton@basw.co.uk](mailto:s.hatton@basw.co.uk)

**Editorial Advisory Board**  
Avery Bowser (chair), Laura Davis,  
Peter Feldon, Lindsay Giddings, Sumayya  
Hanson, Daniel Keeler, Marrienne Palin,  
Bill Stone, Nicola Sylvester

**Advertising**  
David Nelmes, Winterburn Media Ltd  
Tel: 01309 690063  
Email: [david@winterburnmedia.co.uk](mailto:david@winterburnmedia.co.uk)

**Printed by: PCP Ltd**  
Haldane, Halesfield 1, Telford  
TF7 4QQ

**Published by The British Association of Social Workers**

The views expressed in this magazine are not necessarily those of the Association.

The paper used in this publication is sourced from sustainable forests.

ISSN 1352-3112. ©BASW 2018

