

INSIDE THIS ISSUE



NEWS

Fix causes of stress, don't blame workers

SWU conference hears from employment expert
PAGE 6



IN FOCUS

The traumatic toll of welfare cuts

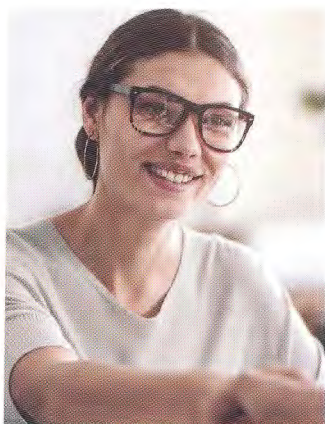
Study reveals stress and stigma claimants face
PAGE 15



IN FOCUS

Supporting domestic violence victims

Where social work can fall short and how to improve
PAGE 17



IN FOCUS

Should I stay or should I go (agency)?

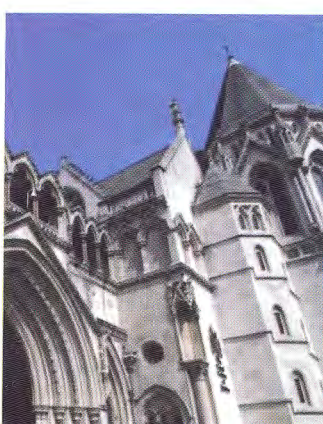
PSW investigates the over-reliance on locum staff
PAGE 23



VIEWPOINT

Are apprenticeships good for profession?

Prof Jane Tunstall says key issues remain unaddressed
PAGE 28



AT THE BACK

When the courts over-ruled council

Lessons from an adoption and kinship care case
PAGE 36

From the Editor
SHAHID NAQVI



Unacceptables that need to be addressed

There's plenty to be proud of in social work. Take for example Hillsborough mother Margaret Aspinall's praise for the social worker who helped her after the loss of her son in the football stadium tragedy (page five). Or our interview with Viv Cree on a life in social work (page 19). There's also the countless unsung ways social workers make a difference to people in their everyday working life.

Sadly, though, this edition contains several examples of what gets in the way of good social work. High vacancy rates leading to an over-reliance on agency workers is one, covered in the latest focus on The Unacceptables.

This edition also contains a first-hand account from a newly qualified social worker who left her first job after less than a year. And the case of Michael Sira-Parfitt highlighted in our Welsh news section should also be a sobering warning.

What links all of this are issues around management and working conditions, things BASW and SWU are campaigning hard on.

This autumn sees the launch of a follow-up report on working conditions commissioned by SWU and BASW that appears to show things are getting worse. Which really is unacceptable.

If you have a view on any of our editorial content or ideas for future articles contact editor@basw.co.uk

BASW
Wellesley House, 37 Waterloo Street,
Birmingham B2 5PP
Tel: 0121 622 3911 www.basw.co.uk

Editor
Shahid Naqvi
Email: shahid.naqvi@basw.co.uk

Assistant Editor
Andy McNicoll
Email: andy.mcnicoll@basw.co.uk

Production assistant
Susan Hatton
Email: s.hatton@basw.co.uk

Editorial Advisory Board
Avery Bowser (chair), Laura Davis,
Peter Feldon, Mike Garforth, Lindsay
Giddings, Sumayya Hanson, Daniel
Keeler, Marianne Palin, Bill Stone,
Nicola Sylvester

Advertising
David Nelmes, Winterburn Media Ltd
Tel: 01309 690063
Email: david@winterburnmedia.co.uk

Printed by: PCP Ltd
Haldane, Halesfield 1, Telford
TF7 4QQ
Published by The British

Association of Social Workers
The views expressed in this magazine are
not necessarily those of the Association.

The paper used in this publication is
sourced from sustainable forests.

ISSN 1352-3112. ©BASW 2018

BASW

The professional association for
social work and social workers