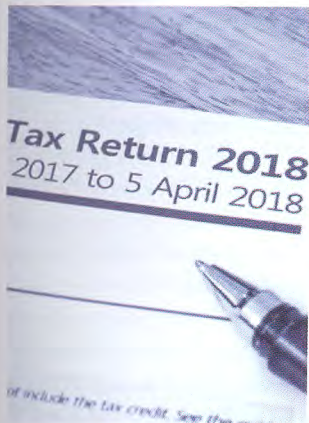


# INSIDE THIS ISSUE



## NEWS

### Agency workers hit by shock tax bill

Warning to those using umbrella companies

PAGE 5



## IN FOCUS

### Social work: the next generation

Meet the students about to start their studies

PAGE 14



## IN FOCUS

### It's NOT OK Computer!

Workplace tech problems and solutions

PAGE 23

From the Editor  
**SHAHID NAQVI**



## Journeys start in the people's profession

In a profession very much about people, to coincide with the start of the academic year this edition focuses on those who choose to become social workers.

Our cover story features five students taking different routes into the profession, with very different stories to tell. What's common though is a sense of excitement about the career they are embarking on and a shared motivation to make a positive change to people's lives. People like Alex Wheatle who on page 22 shares his experience of growing up in care.

Elsewhere, there's advice on getting the most out of your social work course and tips on finding a job. BASW chief executive Ruth Allen gives a passionate rallying call to the next generation on page 27.

And in our viewpoint section, Claire Ogborn compares social workers to artists, each needing the right conditions for their creative work to flourish.

Those who have been in the profession longer will know all about one of the barriers to good social work – bad IT systems. Our series on The Unacceptables looks at this on page 23.

For the sake of today's and tomorrow's generation, it's important such issues are recognised and addressed.

If you have a view on any of our editorial content or ideas for future articles contact [editor@basw.co.uk](mailto:editor@basw.co.uk)

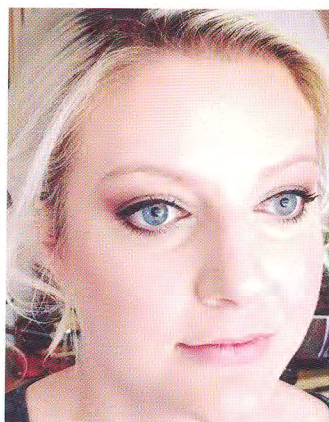


## IN FOCUS

### Growing up in the care system

Author Alex Wheatle shares his experiences

PAGE 22



## VIEWPOINT

### Getting to the art of our profession

Claire Ogborn on our artistic temperament

PAGE 28



## AT THE BACK

### Words of wisdom for new students

Graduates and an academic share tips

PAGE 33

**BASW**  
Wellesey House, 37 Waterloo Street,  
Birmingham B2 5PP  
Tel: 0121 622 3911 [www.basw.co.uk](http://www.basw.co.uk)

**Editor**  
Shahid Naqvi  
Email: [shahid.naqvi@basw.co.uk](mailto:shahid.naqvi@basw.co.uk)

**Assistant Editor**  
Andy McNicoll  
Email: [andy.mcnicoll@basw.co.uk](mailto:andy.mcnicoll@basw.co.uk)

**Production assistant**  
Susan Hatton  
Email: [s.hatton@basw.co.uk](mailto:s.hatton@basw.co.uk)

**Editorial Advisory Board**  
Avery Bowser (chair), Laura Davis,  
Peter Feldon, Lindsay Giddings, Sumayya  
Hanson, Daniel Keeler,  
Marrianna Palin, Bill Stone,  
Nicola Sylvester

**Advertising**  
David Nelmes, Winterburn Media Ltd  
Tel: 01309 690063  
Email: [david@winterburnmedia.co.uk](mailto:david@winterburnmedia.co.uk)

**Printed by: PCPLtd**  
Haldane, Halesfield 1, Telford  
TF7 4QQ

**Published by The British Association of Social Workers**  
The views expressed in this magazine are not necessarily those of the Association.

The paper used in this publication is sourced from sustainable forests

ISSN 1352-3112. ©BASW 2018

# BASW

The professional association for social work and social workers