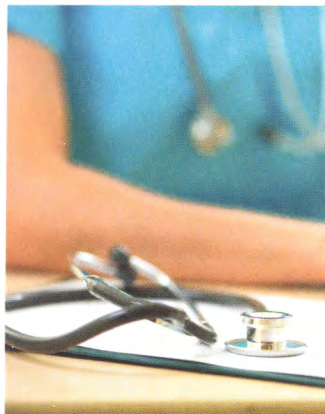


INSIDE THIS ISSUE

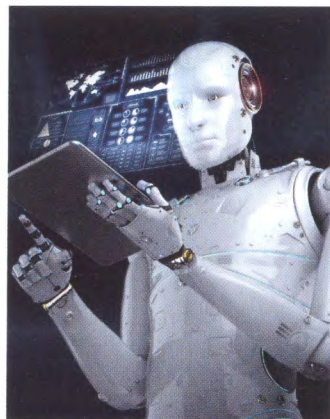


NEWS

Profession sidelined in discharges

Warning over medical model domination

PAGE 6



NEWS

The virtual future of social work

Pros and cons of rise in technology

PAGE 7

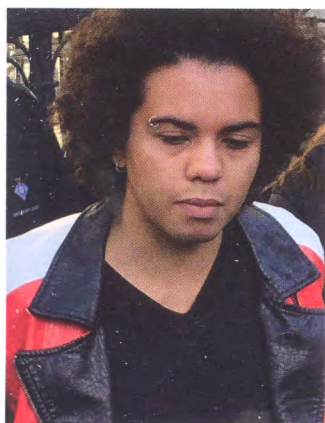


IN FOCUS

It's not just a case of getting a skip

How social work can support people who hoard

PAGE 14

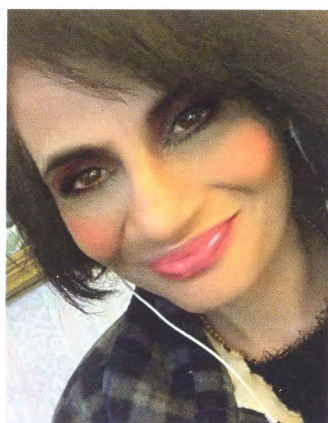


IN FOCUS

The lessons from Bell vs Tavistock

Allan Norman's analysis of puberty blockers ruling

PAGE 18

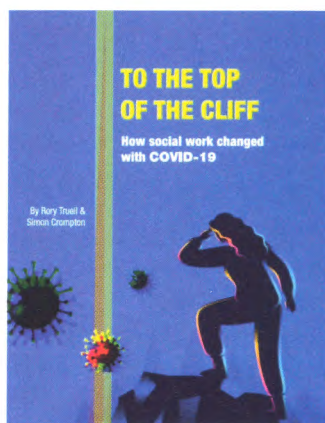


VIEWPOINT

Tackling racism is more than words

Rukhsana Farooqi on the return of anti-racism

PAGE 32



AT THE BACK

New IFSW publication plus more book reviews

PAGE 33

From the Editor
SHAHID NAQVI



Like Attlee, we need to think big post-Covid

A cloud lifted last month with the end of Donald Trump's divisive presidency. And despite the darkest month of the pandemic yet, things will get brighter as the Covid vaccine rolls out this year.

That, however, does not mean we will be in the sunny uplands, far from it.

The impact of Covid has been massive on people and communities, in terms of mental health, loss of jobs, illness and death, increased housing and food insecurity and rising levels of poverty. Despite Prime Minister Boris Johnson's pledge to 'level up', will his government commit to the massive investment in public services needed to do this in the face of recession?

But to not act could be catastrophic. For if there's one thing the pandemic has exposed, it's the deep inequalities within our society. Inequalities French economist Thomas Piketty warns are at 19th century levels in countries such as the UK and US. That age saw great social unrest, the rise of nationalism and, ultimately, war.

Now is not the time for more austerity but to be as bold as former social worker Prime Minister Clement Attlee who bought about the welfare state in the aftermath of the Second World War.

The economy was in a worst state then than it is now – but it was the right thing to do.

If you have a view on any of our editorial content or ideas for future articles contact editor@basw.co.uk

BASW
Wellesley House, 37 Waterloo Street,
Birmingham B2 5PP
Tel: 0121 622 3911 www.basw.co.uk

Editor
Shahid Naqvi
Email: shahid.naqvi@basw.co.uk

Production assistant
Susan Hatton
Email: s.hatton@basw.co.uk

Editorial Advisory Board
Daniel Keeler and Laura Davis, (co-

chairs), Yvonne Boyle, Lindsay Giddings, Sumayya Hanson, Bill Stone, Nicola Sylvester, Tim Parkinson, Rukhsana Farooqi, Sally Parker (adviser)

Advertising
David Nelmes, Winterburn Media Ltd
Tel: 01309 690063
Email: david@winterburnmedia.co.uk

Printed by: PCP Ltd, Haldane, Halesfield 1, Telford, TF7 4QQ
Published by The British Association of Social Workers

The views expressed in this magazine are not necessarily those of the Association.

The paper used in this publication is sourced from sustainable forests.

ISSN 1352-3112. @BASW 2021

BASW

The professional association for social work and social workers