

INSIDE THIS ISSUE



NEWS

Working from home is the 'new normal'
90 per cent of social workers still home-based
PAGE 6



NEWS

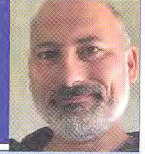
Job insecurity fear for non-jabbed
Vaccine requirement could be widened
PAGE 8



IN FOCUS

Fleeing the Taliban - the Afghan crisis
Six-page focus on the issues facing refugees
PAGES 12-17

From the Editor
SHAHID NAQVI



There is no right route for fleeing from oppression

What does it take to leave everything you know and board a plane to an uncertain future? This was the reality that faced thousands of Afghan citizens following the shock takeover of their country by the Taliban.

Social workers have been at the forefront of supporting refugees arriving in this country, though this is rarely heard. On pages 14 and 15 we give voice to frontline social workers at Heathrow Airport and a local authority helping to settle Afghans once dispersed. Their work is the tip of an iceberg of a long journey for the new arrivals who will require ongoing support, not least to deal with mental health issues such as trauma arising from so sudden a departure.

The UK has pledged to take in 20,000 Afghan refugees over the next five years – a relatively small number. But it is likely that over the coming months more will flee across land, putting themselves at risk of human traffickers.

The government's Nationality and Borders Bill would class those travelling via such unofficial routes as second class refugees. But they are no less worthy of support, no less desperate. In fact, to go to such lengths, they may be more so.

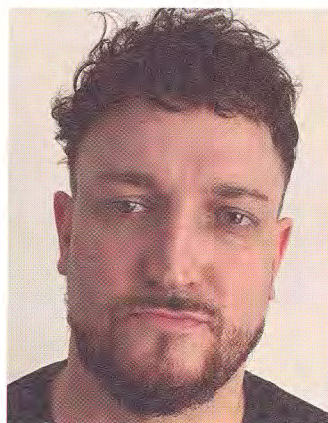
The chaotic scenes at Kabul Airport are a reminder that all those fleeing oppression should be treated with compassion.

If you have a view on any of our editorial content or ideas for future articles contact editor@basw.co.uk



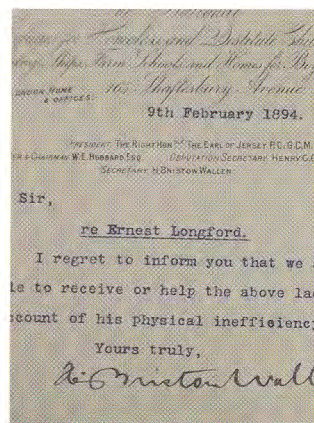
IN FOCUS

Golden nuggets of social work
Voices from BASW's Heritage Project
PAGES 18-23



VIEWPOINT

Food security must be part of our duty
Dominic Watters on his 'Food is Care' campaign
PAGE 30



AT THE BACK

Know your history
Polly Barnes looks at social work past and present
PAGE 32

BASW
Wellesley House, 37 Waterloo Street,
Birmingham B2 5PP
Tel: 0121 622 3911 www.basw.co.uk

Editor
Shahid Naqvi
Email: shahid.naqvi@basw.co.uk
07747 845098

Production assistant
Susan Hatton
Email: s.hatton@basw.co.uk

Editorial Advisory Board
Daniel Keeler and Laura Davis (co-chairs),
Yvonne Boyle, Lindsay Giddings,
Sumayya Hanson, Bill Stone, Nicola
Sylvester, Tim Parkinson, Emma Taylor-
Hill, Sally Parker (adviser)

Advertising
David Nelmes, Winterburn Media Ltd
Tel: 01309 690063
Email: david@winterburnmedia.co.uk

**Printed by: PCP Ltd, Haldane,
Halesfield 1, Telford, TF7 4QG**

Published by The British Association of Social Workers
The views expressed in this magazine are not necessarily those of the Association.

The paper used in this publication is sourced from sustainable forests.

ISSN 1352-3112. ©BASW 2021

BASW
The professional association for social work and social workers