

INSIDE THIS ISSUE

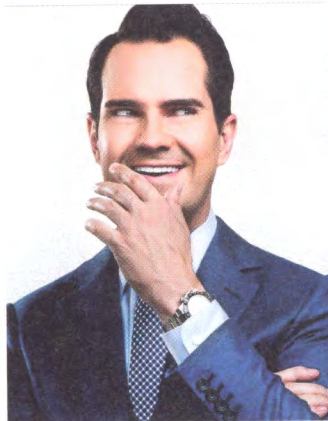


NEWS

Social workers can help save the planet

Role as 'change makers' to reverse global warming

PAGE 6



NEWS

Call to cancel comic's show after racial slur

Social workers join protest against Jimmy Carr

PAGE 11

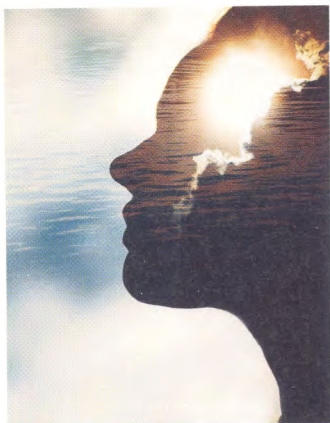


IN FOCUS

Helping to make a home for Ukrainians

Need for social workers' assessment skills

PAGE 14



IN FOCUS

The art and science of intuition

Why and how intuition could be taught

PAGE 26

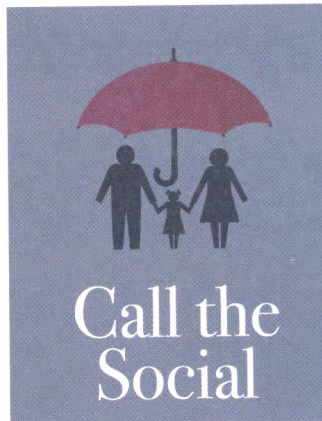


VIEWPOINT

Stop calling us service users

Expert by experience Tammy Mayes' message

PAGE 30



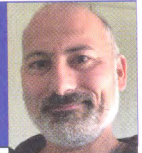
AT THE BACK

A window into where we have come from

Review of Call the Social by Julia Ross

PAGE 35

From the Editor
SHAHID NAQVI



The peacemakers not warmongers will win through

What a difference a month makes... When I last wrote this column, war had not yet started in Ukraine. Since then, Europe's geopolitical landscape has shifted with repercussions for us all – and reverberations felt across the world.

The media has run out of adjectives to describe Russia's brutal invasion of Ukraine, or the brave resistance put up by the Ukrainian people.

So far more than three million people have fled the country and 6.5 million are internally displaced. It's a mass migration not seen in Europe since the Second World War.

The conflict is also a reminder of how fickle and transient peace can be and that our settled ordered lives can be shattered in an instant.

It was perhaps something of prophetic coincidence that the horrors unfolding in Ukraine happened in a month that also celebrated World Social Work Day.

For ultimately it will be the peacemakers, the conflict resolvers and the rebuilders who will be there working with people on the ground long after the warmongers have left the scene. And it will be the skills of professionals like social workers that will help communities heal from the trauma they have suffered.

While things may look grim today, social work gives us hope for a better tomorrow.

If you have a view on any of our editorial content or ideas for future articles contact editor@basw.co.uk

BASW
Wellesley House, 37 Waterloo Street,
Birmingham B2 5PP
Tel: 0121 622 3911 www.basw.co.uk

Editor
Shahid Naqvi
Email: shahid.naqvi@basw.co.uk
07747 845098

Production assistant
Susan Hatton
Email: s.hatton@basw.co.uk

Editorial Advisory Board
Daniel Keeler and Laura Davis (co-chairs),
Yvonne Boyle, Lindsay Giddings,
Sumayya Hanson, Bill Stone, Nicola
Sylvester, Tim Parkinson, Emma Taylor-
Hill, Sally Parker (adviser)

Advertising
David Nelmes, Winterburn Media Ltd
Tel: 01309 690063
Email: david@winterburnmedia.co.uk

**Printed by: PCP Ltd, Haldane,
Halesfield 1, Telford, TF7 4QQ**

**Published by The British
Association of Social Workers**
The views expressed in this magazine are
not necessarily those of the Association.

The paper used in this publication is
sourced from sustainable forests.

ISSN 1352-3112. @BASW 2022

BASW
The professional association for
social work and social workers