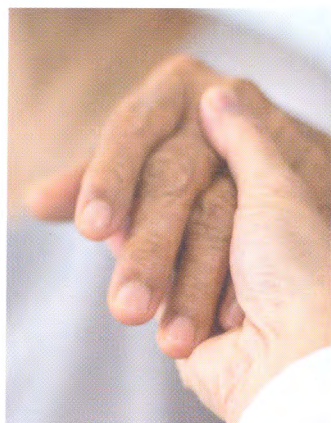


INSIDE THIS ISSUE



NEWS

Double job deadline staffing crisis fear

Social care workers have until 3 Feb for first vaccine

PAGE 6



NEWS

Sector call as DfE plans to end NAAS

Talk to social workers before replacing scheme

PAGE 8



IN FOCUS

The change we must campaign for

Spelling out the priorities for child protection

PAGE 14

From the Editor
SHAHID NAQVI



When the rich say tax us more we should listen

Lost amid the hullabaloo emanating from Westminster last month was a striking statement from 100 of the world's richest people. These titans of capitalism basically said tax us more; that while many have experienced increased financial hardship over the last two years, their wealth has grown.

It's not every day those at the top of the money tree say what most of us instinctively know.

Wealth inequality, along with climate change, is the biggest evil of our time. Both are man-made. Both are within our power to fix.

Intuitively we know it to be wrong that people are using food banks and have to choose whether to heat or eat in one of the world's richest countries.

Social workers also know that many social problems stem from poverty and inequality.

And yet, as we emerge from two years of Covid on the back of ten years of austerity, we now face a cost of living crisis. This, and the 1.25 per cent increase in National Insurance from April, will hit the least well off the hardest.

Perhaps the argument that increasing tax for the well off stifles enterprise or leads to a drain of wealth-earning 'talent' is challenged by that statement from the world's richest people.

It should at least remind those in power that fairer distribution of wealth benefits us all.



IN FOCUS

Social working in an airport

A day in the life of a team at Heathrow Airport

PAGE 26

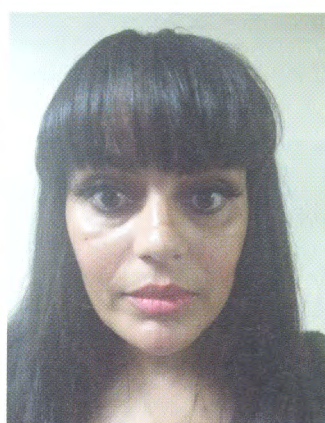


VIEWPOINT

We must end the ethnicity pay gap

Susan Baker on disturbing research findings

PAGE 31



AT THE BACK

In social work I am ambitious for others

Our new student columnist

Georgiana Ndlovu
PAGE 37

BASW
Wellesley House, 37 Waterloo Street,
Birmingham B2 5PP
Tel: 0121 622 3911 www.basw.co.uk

Editor
Shahid Naqvi
Email: shahid.naqvi@basw.co.uk
07747 845098

Production assistant
Susan Hatton
Email: s.hatton@basw.co.uk

Editorial Advisory Board
Daniel Keeler and Laura Davis (co-chairs),
Yvonne Boyle, Lindsay Giddings,
Sumayya Hanson, Bill Stone, Nicola
Sylvester, Tim Parkinson, Emma Taylor-
Hill, Sally Parker (adviser)

Advertising
David Nelmes, Winterburn Media Ltd
Tel: 01309 690063
Email: david@winterburnmedia.co.uk

**Printed by: PCP Ltd, Haldane,
Halesfield 1, Telford, TF7 4QQ**

Published by The British Association of Social Workers
The views expressed in this magazine are not necessarily those of the Association, PSW staff or its editorial board.

The paper used in this publication is sourced from sustainable forests.
ISSN 1352-3112. ©BASW 2022

BASW
The professional association for social work and social workers

If you have a view on any of our editorial content or ideas for future articles contact editor@basw.co.uk